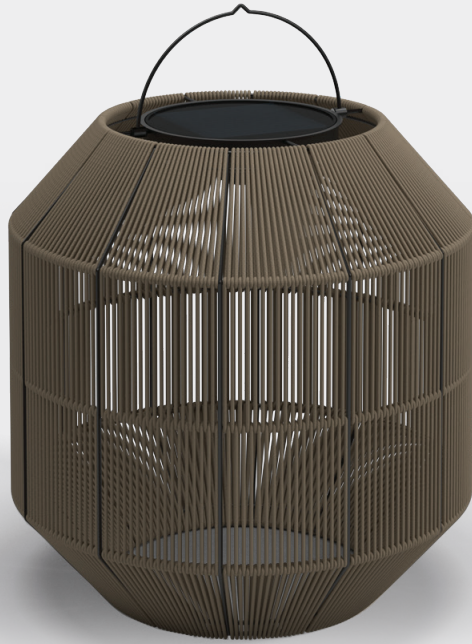


# AMBIENT NEST



WIDTH	45cm / 17.5"
DEPTH	45cm / 17.5"
HEIGHT	58cm / 20.5"
PRODUCT WEIGHT	4kg / 9lb
CBM / CCF	0.14m <sup>3</sup> / 5.06ft <sup>3</sup>
NUMBER OF LED'S	18
COLOUR TEMPERATURE	2700K
LUMENS	100 min - 180 max
BATTERY TYPE	Li-Ion
IP RATING	IP64
ADAPTOR INPUT	100V - 240V DC
ADAPTOR OUTPUT	4.2V
DESIGNER	Henrik Pedersen
ASSEMBLY	Not Required

ITEM NUMBERS
104888 : Ambient Nest (Fawn)
104887 : Ambient Nest (Steel)

**MATERIALS**  
Woven all-weather wicker over colour matched powder coated stainless steel frame. Supplied with 2.5m hanging wire. Solar & mains power rechargeable LED light unit. Radio frequency remote control with 8 light output settings. Working distance for remote control of up to 35m. Battery life of approximately 8 hours on maximum light setting.

**ACCESSORIES**  
104875 : Additional LED Light Unit  
104874 : Additional Remote Control

**WARRANTY / MAINTENANCE**  
See [gloster.com](http://gloster.com) for warranty terms & maintenance instructions.

WICKER COLOURS

