

# Nuage

Ronan & Erwan Bouroullec, 2016



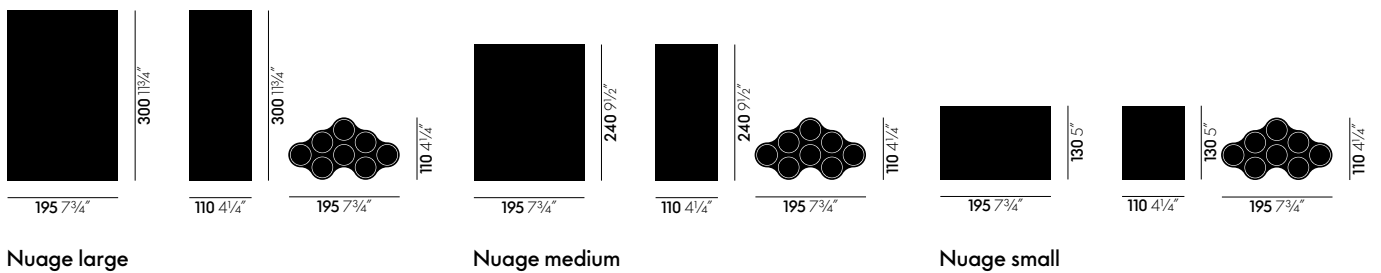
The shape of the Nuage vases made its first appearance in the oeuvre of Ronan and Erwan Bouroullec in 2002. Reminiscent of a cloud, the motif was originally produced as a plastic shelf module that can be grouped into clusters or large-scale configurations. Eight tubular cavities pierce the flat surfaces of the modular element while also defining the form's outer contours. Over the years, the Bouroullec brothers have varied this shape and repeatedly incorporated it in their graphic work.

For the Nuage vase, the designers executed the cloud motif in varying lengths. The cavities in the basic form are now positioned upright, dividing the vase into eight tubes that can be used for the artful arrangement of flowers and grasses. The undulating surfaces produce an attractive interplay of light and shadow, and individual vases can be assembled into entire 'cloud formations'.

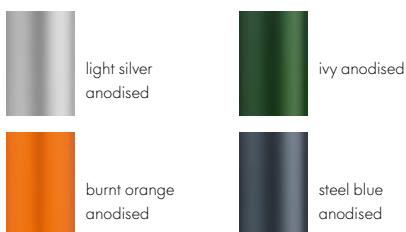
The Nuages vases are made of coloured, anodized aluminium or ceramic and come in several different sizes.

- **Material:** anodized aluminum, rubber stoppers.

## DIMENSIONS



## COLOURS AND MATERIALS



Nuage

# Nuage (céramique)

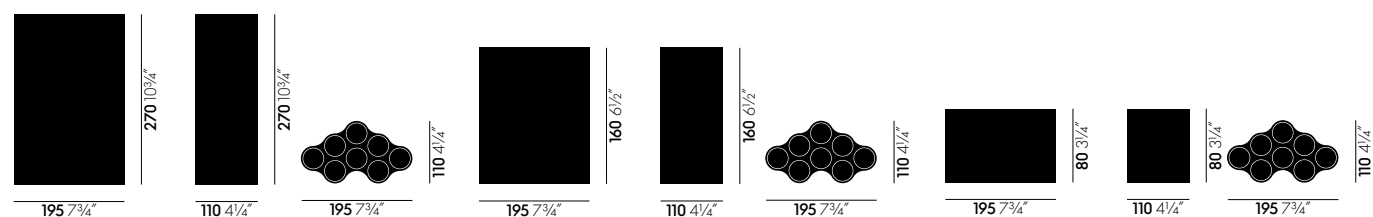
Ronan & Erwan Bouroullec, 2018



The Nuage vases in ceramic are elaborately handcrafted, resulting in scarcely discernible differences that make each charming vase a unique object. The undulating surfaces produce an attractive interplay of light and shadow, and individual vases can be assembled into entire 'cloud formations'.

- **Material:** ceramic, rubber stoppers.

## DIMENSIONS

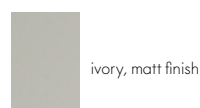


Nuage (céramique) large

Nuage (céramique) medium

Nuage (céramique) small

## COLOURS AND MATERIALS



Nuage (céramique)

