

# Freeform Sofa

Isamu Noguchi, 1946

vitra.



## Freeform Sofa

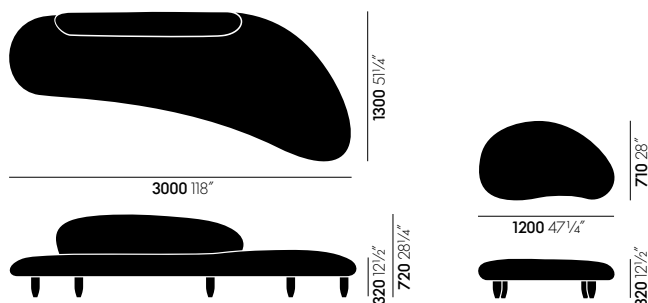
The sculptural quality of Noguchi's design vocabulary finds expression in the Freeform Sofa: it is entirely different from other designs of the same period, appearing in combination with the Ottoman like an enlarged sculpture of flat, rounded river stones. The slender organic forms are fluid and graceful. Noguchi emphasises the lightness of the elements with thin yet comfortable upholstery and a choice of cover fabrics in natural colours.

The Freeform Sofa and companion Ottoman were produced around 1950 in limited numbers. Today, the few remaining pieces achieve record prices at auction. The designs have been manufactured in an authentic re-edition since 2002. The sofa is suitable not only for use in living spaces, but also in lobbies, hotels and retail shops.

## Materials

- **Frame:** solid beech.
- **Body and cushions:** wooden frame with polyurethane foam.
- **Covers:** removable.
- **Seat height:** 320 mm (280 mm with applied load, measured in accordance with EN 1335-1).
- **Legs:** solid maple, natural finish or walnut stain.

## DIMENSIONS (in accordance with EN 1335-1)



Freeform Sofa

Freeform Ottoman



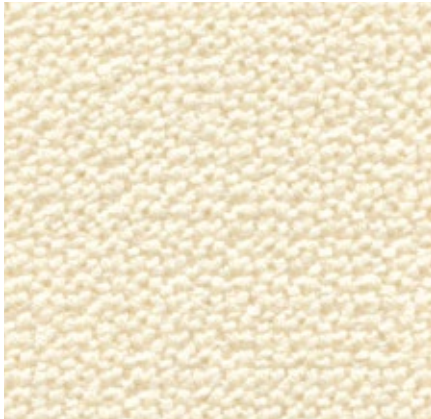
54  
maple



stained walnut-  
colored

Legs

# Credo Home/Office, F120



Credo is a durable woollen fabric made of premium worsted yarn with a pleasant feel. The two- and three-tone colours give this fabric a characteristic structure and vibrant appearance. Credo allows for an effective exchange of heat to ensure comfortable thermal conditions for the sitter. The fabric can also be used in office environments.

Credo is available in 22 colours.

Material	5% polyamide, 95% new wool
Weight	640 g/m <sup>2</sup> (18.9 oz/y <sup>2</sup> )
Width	145 cm +/- 2 cm (57")
Abrasion resistance	100,000 Martindale
Fastness to light	Type 6
Pilling	Grade 4
Fastness to rubbing	Grade 4-5 dry and wet



11  
cream/dolphin



20  
dolphin/steel  
blue



06  
anthracite/  
elephant



05  
chocolate/black



16  
red chilli



14  
sand/avocado



21  
royal blue/  
elephant



07  
black/anthracite



27  
bitter chocolate



15  
saffron



19  
lime/curry



22  
emerald/ivy



08  
dark blue/black



24  
mauve grey/  
mid-grey



23  
pale rose/dark  
orange



12  
rock



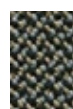
13  
salt'n pepper



26  
teal blue/black



17  
black/aubergine



25  
mother-of-pearl/  
black



18  
pale rose/  
cognac



01  
cream

Credo

