

Compas Direction

Jean Prouvé, 1953

vitra.



Compas Direction

Jean Prouvé developed several versions of the Compas table around 1950, basing the design on the structural principles for which he is known. Common to all of them are the slender, elegantly splayed legs, which call to mind the hinged arms of a compass – ‘le compas’ in French.

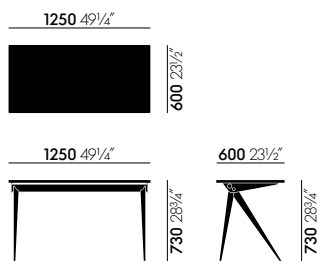
With its compact dimensions, the desk is ideal for the contemporary, largely paperless home office.

Materials

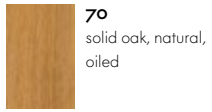
- **Table top:** solid wood with oiled finish; natural oak, smoked oak or American walnut.
- **Base:** bent sheet steel, powder-coated finish (smooth).

The oiled solid wood table top gives Compas Direction an individual touch.

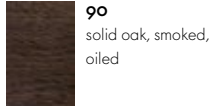
Dimensions



Compas Direction



70
solid oak, natural,
oiled



90
solid oak, smoked,
oiled



75
solid American
walnut, oiled



06
Japanese red
powder-coated
(smooth)



12
deep black
powder-coated
(smooth)



40
chocolate powder-
coated (smooth)



80
coffee powder-
coated (smooth)



88
ecru powder-
coated (smooth)

Table top

Base

