

TECNOLUMEN

TECNOLUMEN GmbH & Co. KG É Lötzer Str. 2-4 É D-28207 Bremen É Tel (0421) 430 41 70 É Fax (0421) 4986685

Assembly instructions and important information HL 3S 81

Technical details:

EU: Power supply: 230-240V / 50-60 Hz

Illuminate:

USA: Power supply: 120V / 60 Hz

Illuminate:

Protection class: I
LED. Module: 230 V, 6 W, 480 lm, 2700 K

Protection class: I
LED. Module: 120 V, 6 W, 480 lm, 2700 K

Dimmable with external leading-edge and trailing-edge dimmers

Safety instructions:

- Never cover the luminaire with a cloth . fire hazard!
- This luminaire may only be wired to the mains by a qualified electrician.
Improper connection causes safety hazards!
- Always ensure that the electricity is switched off when working on the luminaire or changing the bulb.
- Have repair work performed only by an authorized electrician, because electrical power can cause severe injuries!
- Some of the lamp components may get very hot in operation! Avoid skin contact with these components to prevent burns.
- **Do not place the crystal glass ball into the sun (burning-glass effect)!**

Care of lamp:

Use a standard commercial cleaner for the glass ball.

For the chrome plated lamp parts use a chrome polish.

For cleaning the gold plated lamp parts only use a damp micro fibre cloth.

Mounting the luminaire:

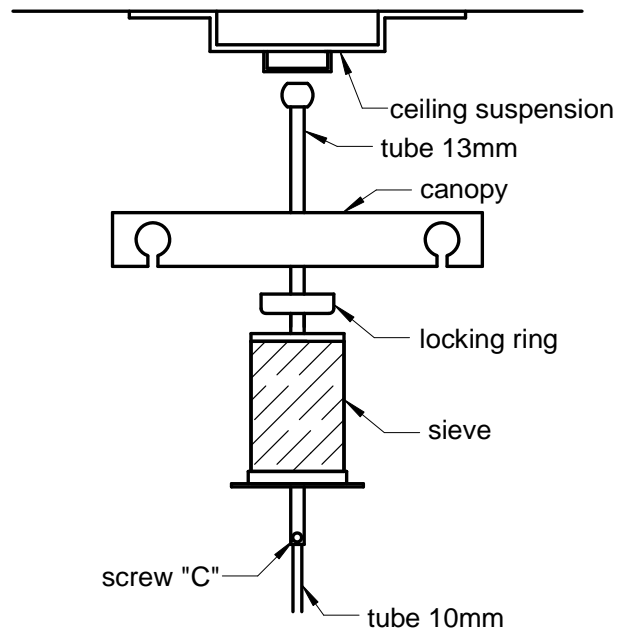
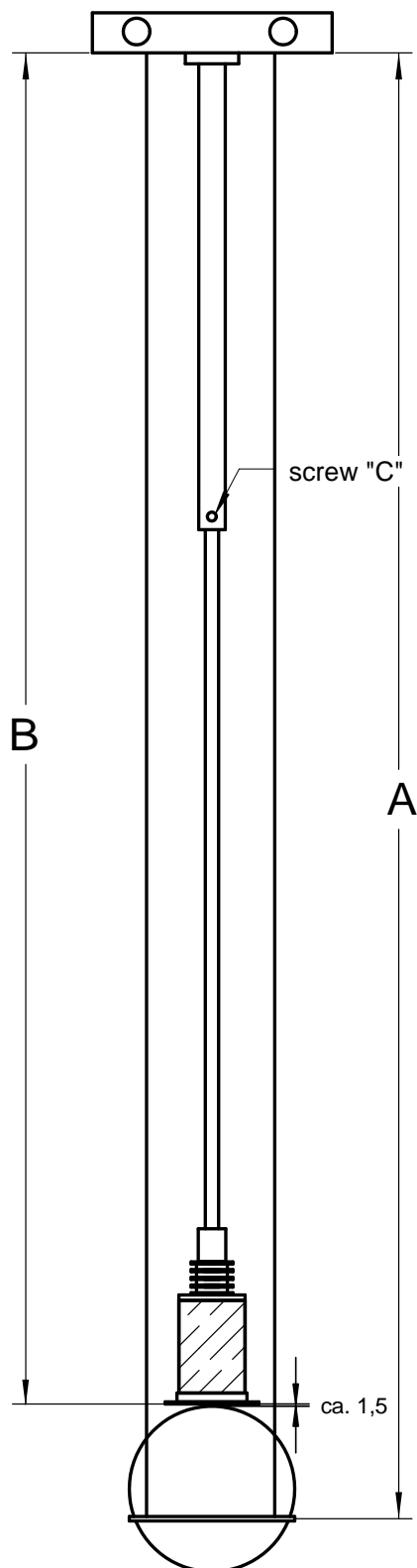
Installation is made easy if you precisely determine the length measurements "A" and "B". Length "A" results from the height of the room minus the height of the table and minus 82 centimetres. You arrive at length "B" by deducting 10 centimetres from length "A".

- Position the ceiling suspension in the intended location and mark the drill-holes positions.
- Make the drilled holes with a 6 mm masonry drill and mount the ceiling suspension to the room ceiling.
- Now dismantle the thicker tube from the thinner tube by loosening the small screw "C" with the enclosed hexagonal spanner.
- At first thread the electric conduction line through the sieve and then through the locking ring.
- Now the both tubes must be remounted and adjusted to length "B". If the thinner tube should be too long, it must be shortened with a metal saw or a tube cutter.
Caution: Do not damage the electric conduction line!
- The electric conduction line must now be shortened so much so that it still protrudes from the ball-and-socket joint by approx. 20 centimetres.
- Then push the canopy over the tubes. Please file the electric conduction line with the 3 hole tag through the ceiling suspension and hang it onto the hook.
- Have the electrical connection installed by an electrician as shown in the connection diagram and **push the protection-cap over the connection terminals.**
- Now the locking ring is pushed towards the ceiling with the canopy and securely bolted.
- Please mark length "A" on each of the 4 ropes. Thread the ropes through the drill holes in the locking ring. The locking devices must be pushed over the ropes and secured with the enclosed hexagonal spanner at the level of the markings.
- Cut off the ropes approx. 12 centimetres behind the locking devices. Insert the ends of the ropes together with the locking devices into the lateral voids of the canopy. Let them glide into the slit opening.
- Place the glass ball into the ring and turn the ball until it appears to be symmetrical.
- The distance between sieve and glass ball should be kept as small as possible. Please lengthen the tubular bars until sieve and glass ball almost touch each other (approx. 1. 2 millimetres in distance). In this way you will obtain an optimal light cone.

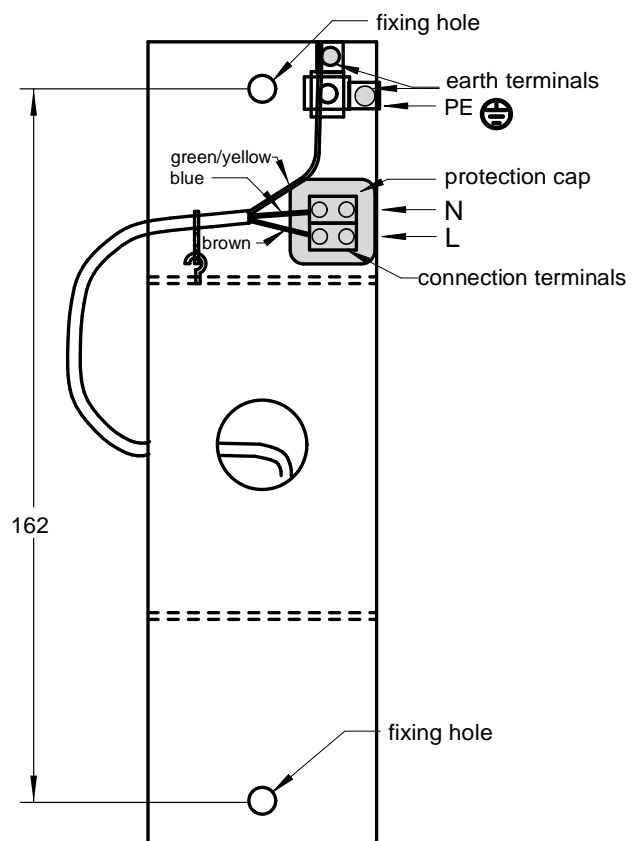
TECNOLUMEN

TECNOLUMEN GmbH & Co. KG É Lötzer Str. 2-4 É D-28207 Bremen É Tel (0421) 430 41 70 É Fax (0421) 4986685

Assembly instructions and important information HL 3S 81



Connection diagram:



TECNOLUMEN

TECNOLUMEN GmbH & Co. KG | Lötener Str. 2-4 | D-28207 Bremen | Tel (0421) 430 41 70 | Fax (0421) 4986685

Infoblatt HL 3S 81

Umbauanleitung:

von E27 Fassung auf LED Leuchtmittel mit Kühlkörper

Demontage der E27 Fassung:

Drehen die bitte die Hülse von der Zugentlastung ab und dann das Rohr heraus.
Das Rohr und die Hülse stehen nun zur Weiterverarbeitung zur Verfügung.
Die E27 Fassung mit der Zugentlastung und Leitung wird nicht mehr benötigt.



Montage des LED Leuchtmittels:

Drehen die bitte das Rohr in den Kühlkörper hinein und dann die Hülse an.

